



WMF COFFEE MACHINES

Base Information

WMF Programat GV Type 7470



WMF Programat GV 7470

Application

Filter Coffee & Hot Water
Bulk Brewer

Capacity

1,000 Cups per Hour

Service Period

Approximately 250,000 Cups

The secret of fresh coffee pleasure even in large quantities... Cost reduction included!

Whenever large quantities of coffee and hot water are needed in the shortest possible time, the WMF Programat GV is the best choice. At the push of a button 2 coffee varieties can be prepared in variable brewing quantities of 1.5 L – 100 L. The coffee is brewed either into a pot or into a storage container. Mobile trolleys allow to prepare the coffee where and when it is needed. This means shorter standing times and thus fresh coffee. A reliable hygiene is guaranteed by the fully automatic cleaning program.

It was our goal to combine a better coffee quality and lower operating expenses in one coffee machine. The WMF Programat GV is the product of this successful symbiosis.

The WMF Programat GV reduces the period between preparation and output of coffee. Instead of paper filter the WMF Programat GV uses a micro-fine strainer made of stainless steel. There is no need for special coffee packing as the dosing of the powder is done fully automatically by the machine.

TECHNICAL DATA

Standard Model

Hourly Output Bulk

14.50 kW

Filter Coffee 125 L of Coffee
or 100 L Coffee & 20 L HW

Hourly Output Pot

Filter Coffee 60 Liters/h
Hot Water 60 Liters/h

Product Containers

Coffee Powder Hopper 2 x 2.5 kg

Dimension

Height x Width x Depth 1,005 x 550 x 510 mm

Weight ~ 70 kg

Connections

Power Supply 3P/N/E 400 V 50/60 Hz / 14.5 kW

Water Supply 1/2" (2 bar)

Drainage DN 40 mm

Options

Storage Container YES

Trolley YES

Timer Functions YES

Grounds Separator YES

WMF AG Coffee Machines International 73312 Geislingen/Steige, Germany

Phone +41 7331 258482 Fax +41 7331 258792, Mail: professional@wmf.com, Web: http://www.wmf.com

Service Agent: RICMAS International Pte. Ltd. 25 International Business Park, German Centre #01-07/10, Singapore 609916

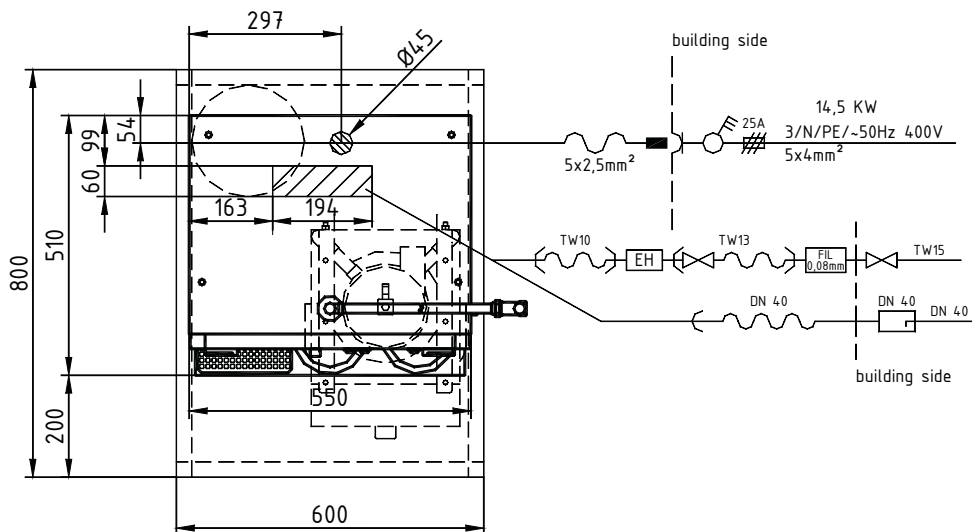
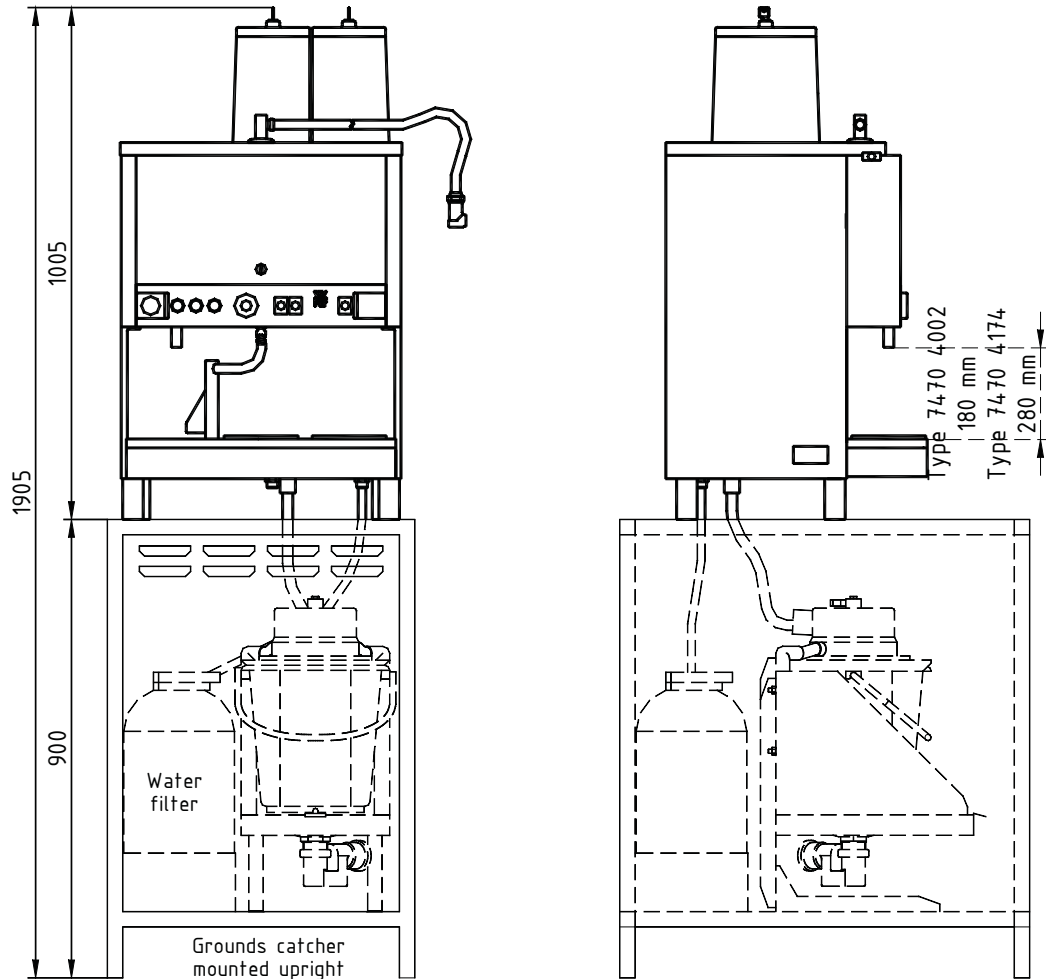
Phone: +65 65628853, Fax: +65 65628854, Mail: wmf@ricmas.com, Web: http://www.ricmas.com



WMF COFFEE MACHINES

Planing Information

WMF Programat GV Type 7470



WMF AG Coffee Machines International 73312 Geislingen/Steige, Germany

Phone +41 7331 258482 Fax +41 7331 258792, Mail: professional@wmf.com, Web: <http://www.wmf.com>

Service Agent: RICMAS International Pte. Ltd. 25 International Business Park, German Centre #01-07/10, Singapore 609916

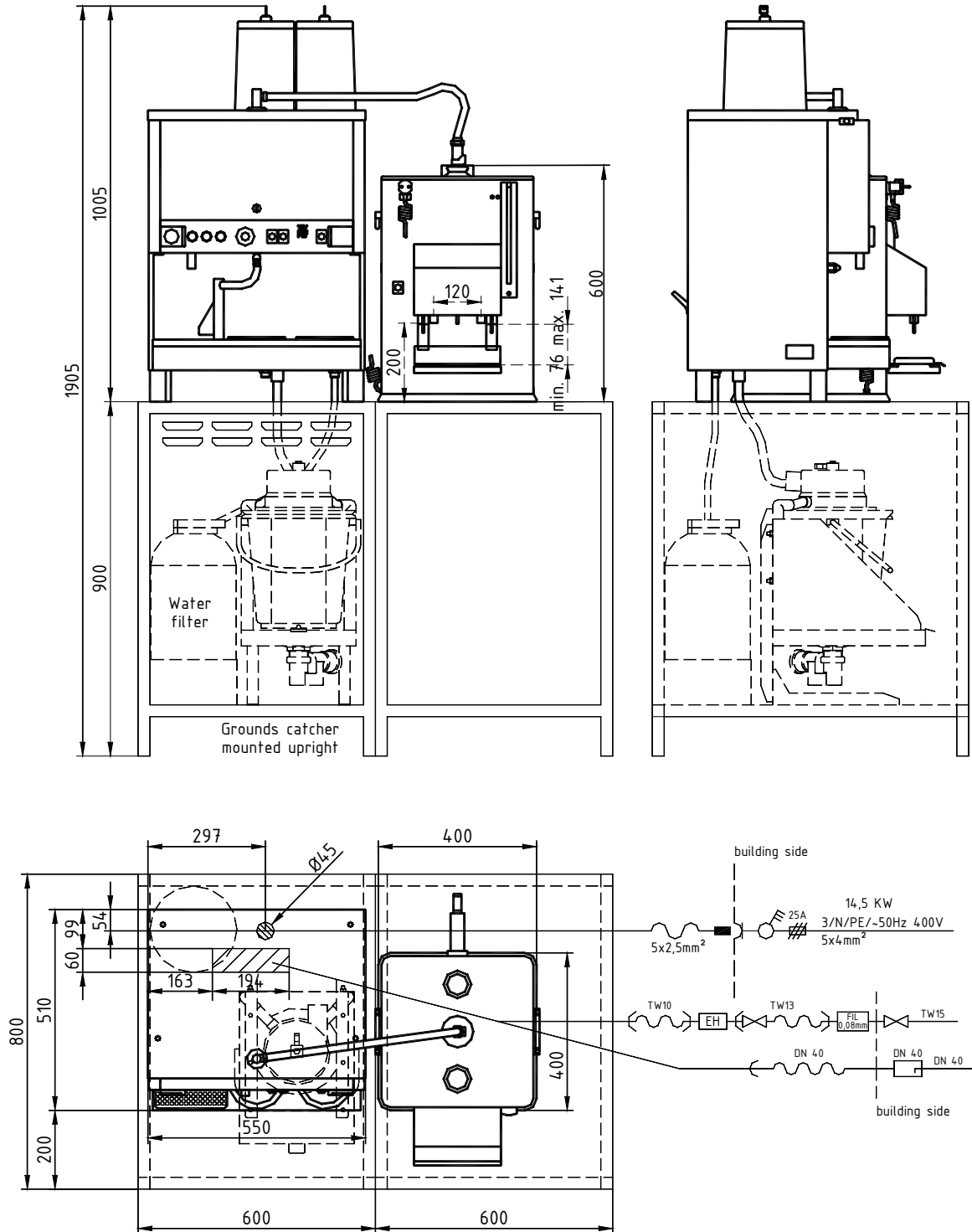
Phone: +65 65628853, Fax: +65 65628854, Mail: wmf@ricmas.com, Web: <http://www.ricmas.com>



WMF COFFEE MACHINES

Planing Information

WMF Programat GV Type 7470 with 20 Litre Container Type 6620



WMF AG Coffee Machines International 73312 Geislingen/Steige, Germany

Phone +41 7331 258482 Fax +41 7331 258792, Mail: professional@wmf.com, Web: <http://www.wmf.com>

Service Agent: RICMAS International Pte. Ltd. 25 International Business Park, German Centre #01-07/10, Singapore 609916

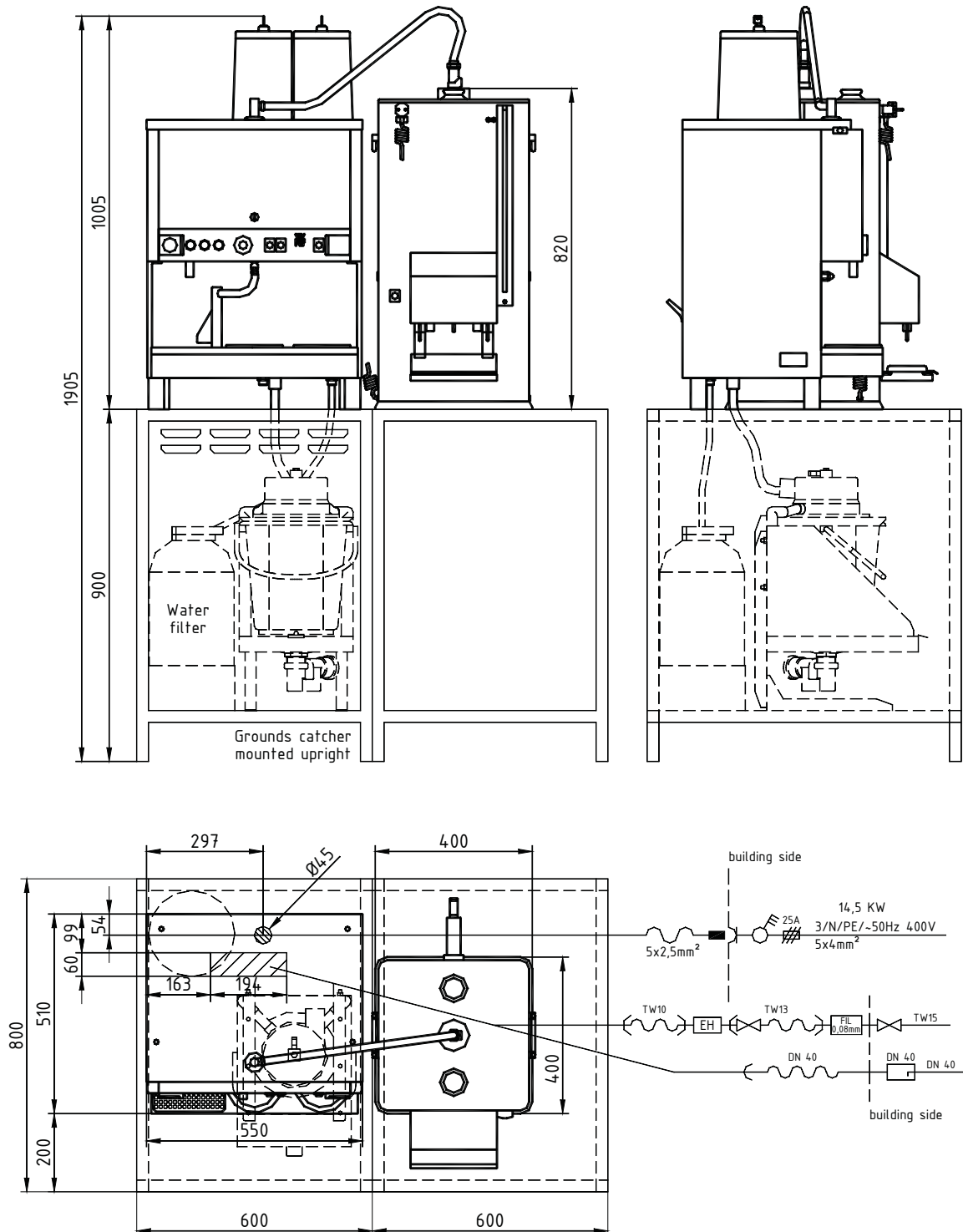
Phone: +65 65628853, Fax: +65 65628854, Mail: wmf@ricmas.com, Web: <http://www.ricmas.com>



WMF COFFEE MACHINES

Planing Information

WMF Programat GV Type 7470 with 40 Litre Container Type 6640



WMF AG Coffee Machines International 73312 Geislingen/Steige, Germany

Phone +41 7331 258482 Fax +41 7331 258792, Mail: professional@wmf.com, Web: <http://www.wmf.com>

Service Agent: RICMAS International Pte. Ltd. 25 International Business Park, German Centre #01-07/10, Singapore 609916

Phone: +65 65628853, Fax: +65 65628854, Mail: wmf@ricmas.com, Web: <http://www.ricmas.com>



WMF COFFEE MACHINES

Data Sheet

WMF Programat GV Type 7470

Brewing process:	filtered coffee, 2 varieties
Output per hour:	volume brewing: 100 L coffee, 20 L hot water pot brewing: 60 L coffee, 60 L hot water
Degree of protection:	IPX0
Protection class:	Protection class I
Perceptible heat emission:	0.68 kWh/h in standby mode
Perceptible heat emission:	13.5 kWh/h in maximum mode
Cont. sound level (Lpa)	< 65 dB (A)
Option:	for use as stationary coffee machine or as mobile station on a trolley
Accessories:	Jumbo water preparation filter, coffee grounds separator with attachment, warmer 20 L or 40 L, large or small trolley, control cable for 2nd hot plate, step for filling pots, adapter (for connecting the flexible cord), volume drain 101 mm long or 166 mm long
Miscellaneous:	wet coffee grounds discharge
Empty weight:	ca. 70 kg
Water connection:	1/2" (TW 15)
Flow pressure:	min. 0.2 MPa at 8 L min.
Drain:	DN 40 (1 1/2"), gradient at least 2%